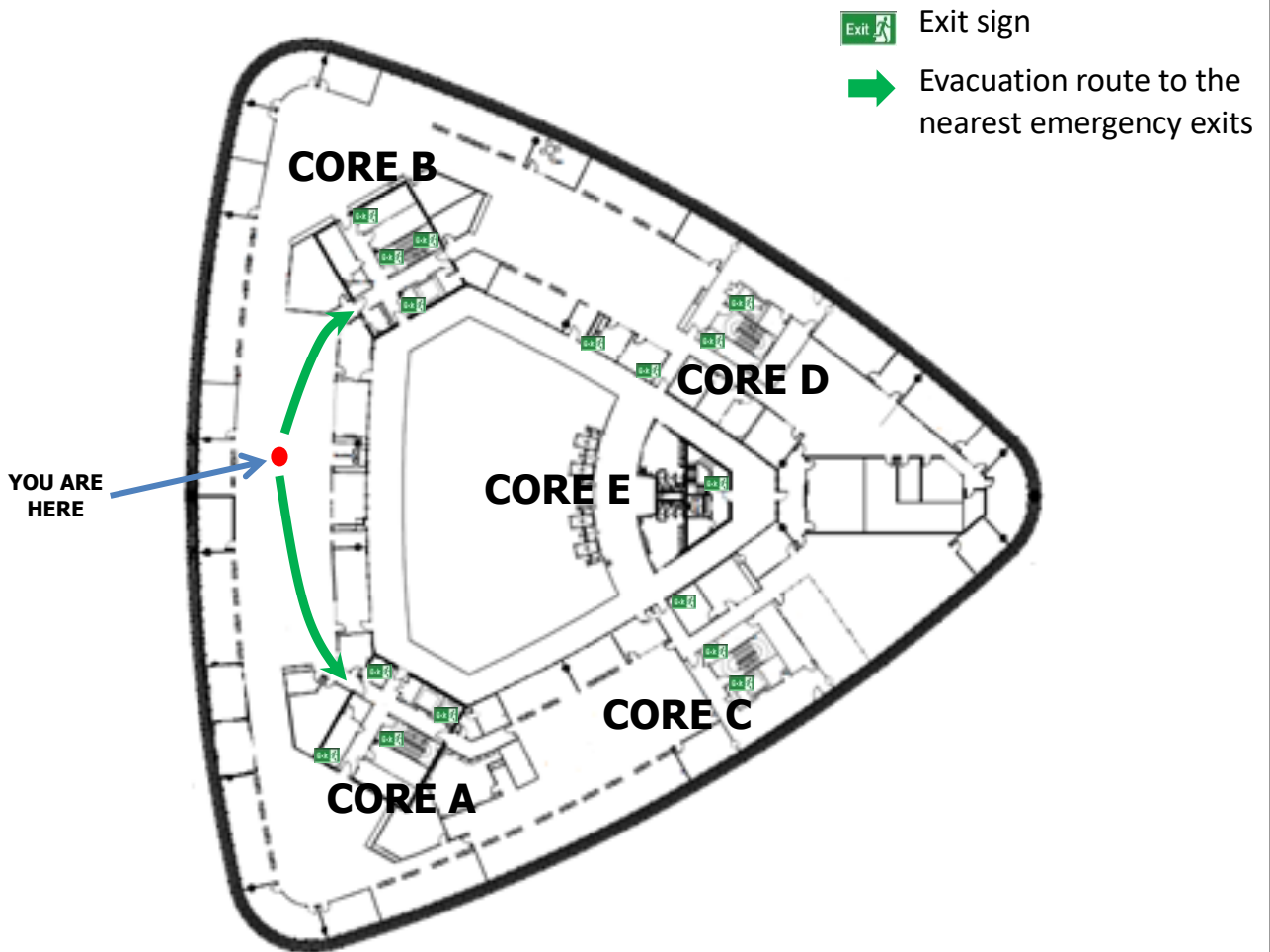


In Case of Emergency

Evacuation Route

(Office Area Core A-B , Level 2)



EVACUATION

- Upon hearing the fire alarm, wait for further instructions before commencing to leave the building.
- Once the instruction is given for evacuation, collect only essential items.
- Do not use the lifts. Proceed to the nearest exit and make your way down to the Ground Floor exits.
- If the nearest exit is inaccessible, then move to the other alternative exits.
- Make your way to the emergency assembly area located at the open carpark of the National Science Centre.

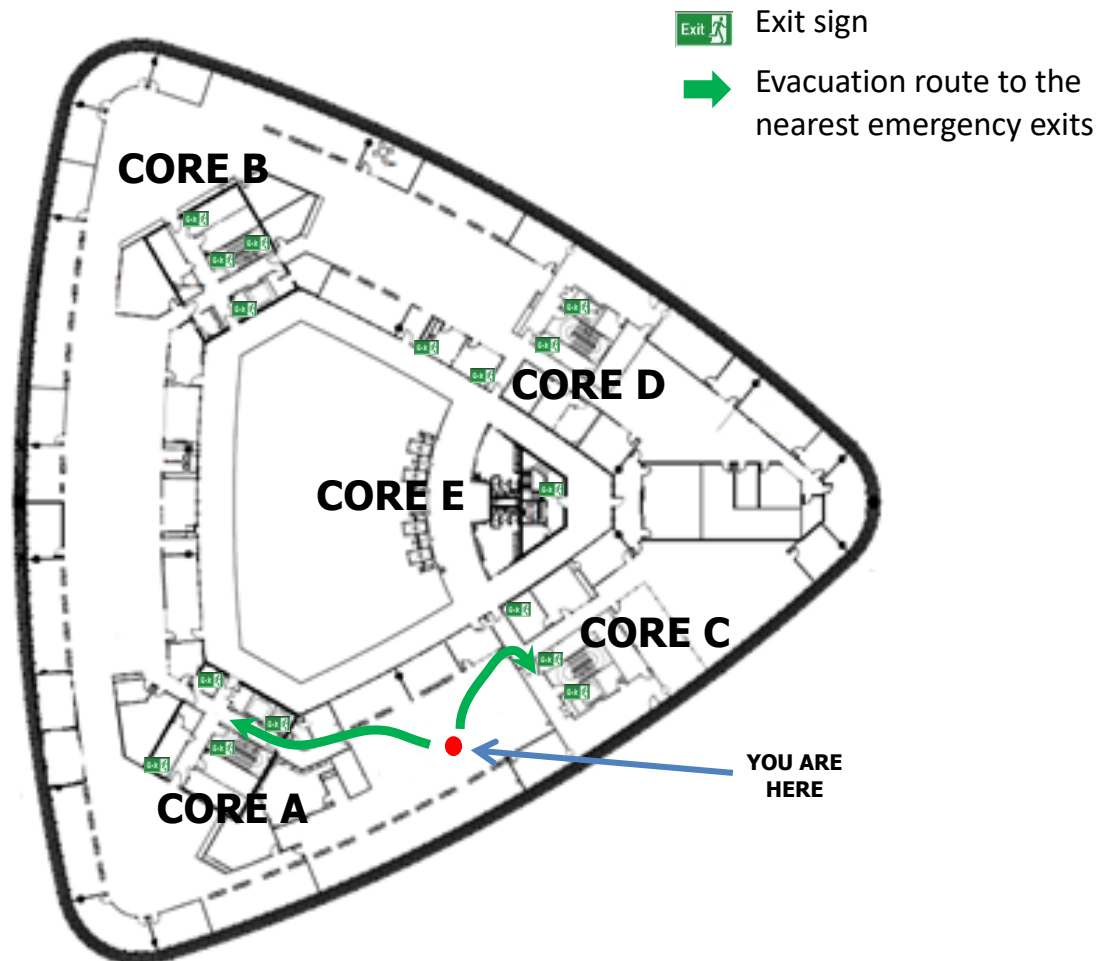
ALERT

- If you notice any incident that may threaten yours and your colleagues' well-being, please call the SC Hotline immediately at 03-62048886/8887.
- Remain calm, state your full name and location, describe the emergency, and follow the instructions from the SC Hotline.

In Case of Emergency

Evacuation Route

(Office Area Core A-C , Level 2)



EVACUATION

- Upon hearing the fire alarm, wait for further instructions before commencing to leave the building.
- Once the instruction is given for evacuation, collect only essential items.
- Do not use the lifts. Proceed to the nearest exit and make your way down to the Ground Floor exits.
- If the nearest exit is inaccessible, then move to the other alternative exits.
- Make your way to the emergency assembly area located at the open carpark of the National Science Centre.

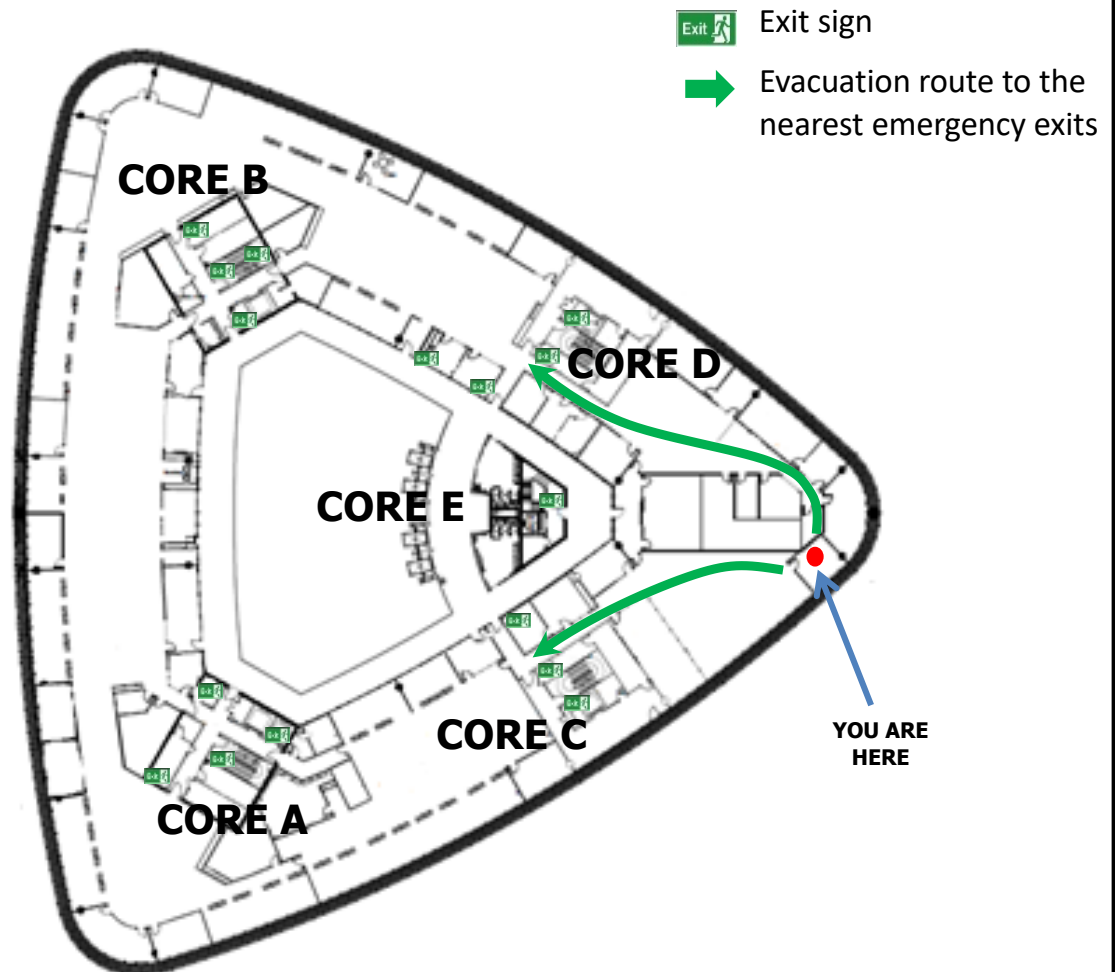
ALERT

- If you notice any incident that may threaten yours and your colleagues' well-being, please call the SC Hotline immediately at 03-62048886/8887.
- Remain calm, state your full name and location, describe the emergency, and follow the instructions from the SC Hotline.

In Case of Emergency

Evacuation Route

(Office Area Core C-D , Level 2)



EVACUATION

- Upon hearing the fire alarm, wait for further instructions before commencing to leave the building.
- Once the instruction is given for evacuation, collect only essential items.
- Do not use the lifts. Proceed to the nearest exit and make your way down to the Ground Floor exits.
- If the nearest exit is inaccessible, then move to the other alternative exits.
- Make your way to the emergency assembly area located at the open carpark of the National Science Centre.

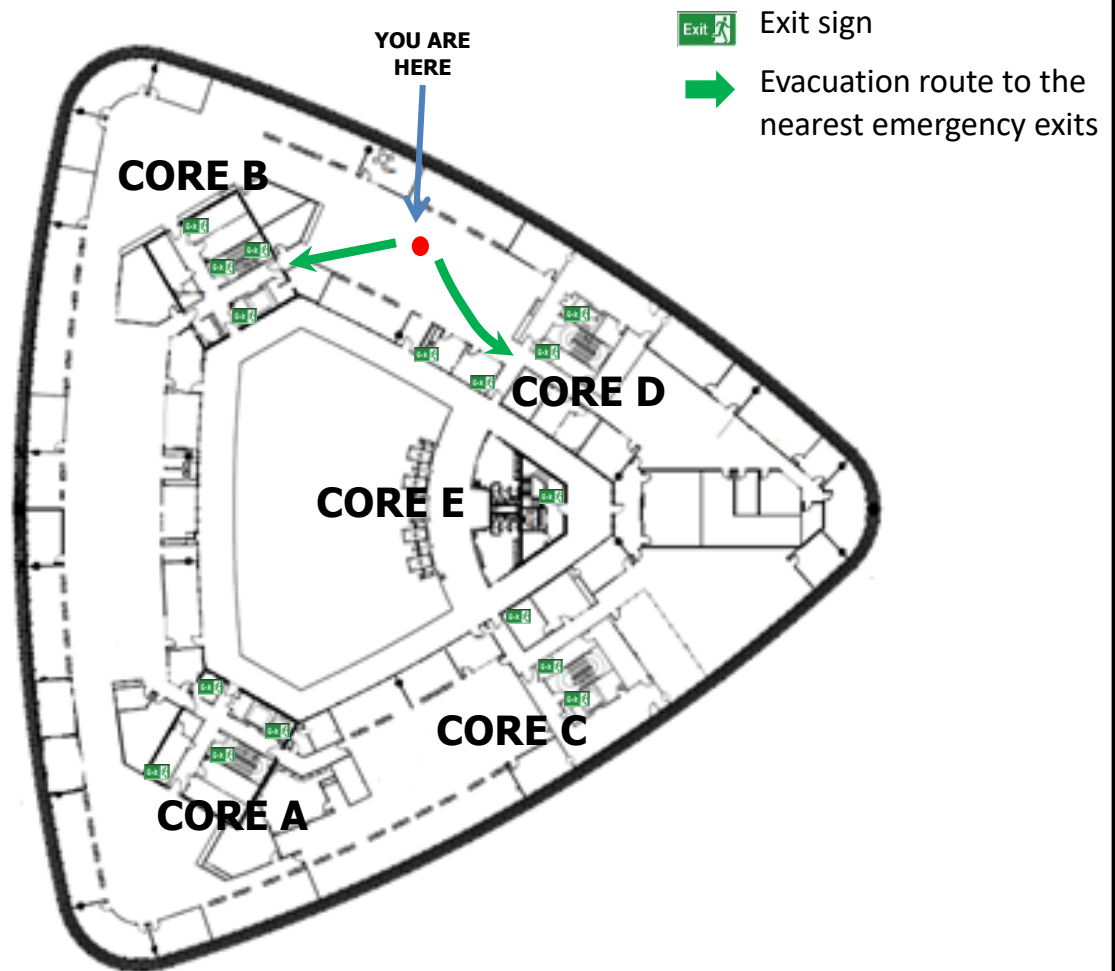
ALERT

- If you notice any incident that may threaten yours and your colleagues' well-being, please call the SC Hotline immediately at 03-62048886/8887.
- Remain calm, state your full name and location, describe the emergency, and follow the instructions from the SC Hotline.

In Case of Emergency

Evacuation Route

(Office Area Core B-D , Level 2)



EVACUATION

- Upon hearing the fire alarm, wait for further instructions before commencing to leave the building.
- Once instruction is given for evacuation, collect only essential items.
- Do not use the lifts. Proceed to the nearest exit and make your way down to the Ground Floor exits.
- If the nearest exit is inaccessible, then move to the other alternative exits.
- Make your way to the emergency assembly area located at the open carpark of the National Science Centre.

ALERT

- If you notice any incident that may threaten yours and your colleagues' well-being, please call the SC Hotline immediately at 03-62048886/8887.
- Remain calm, state your full name and location, describe the emergency and follow the instructions from the SC Hotline.